



EMPLOYEE OWNED



MPOWERING BUSINESS WITH SMARTER FACILITIES

TRI-MGROUP.COM

SOLUTIONS SINCE 1964

♦ PREFABRICATION / VIRTUAL CONSTRUCTION

♦ HIGH & MEDIUM VOLTAGE

♦ ELECTRICAL CONSTRUCTION

♦ BUILDING AUTOMATION SYSTEMS

♦ NETWORK INFRASTRUCTURE

♦ SECURITY - LIFE SAFETY

♦ ENERGY ANALYTICS

♦ 24/7 SERVICE - (800) 456-7782

♦ ENERGETEST

WHOLLY OWNED SUBSIDIARY

HONOR EXCELLENCE SERVICE



TRI-M IS PROUD TO BE A MERIT COMPANY

OUR WORKFORCE MAKES THE DIFFERENCE

OUR STORY

- 1964** Brothers Tom & Dick Musser launch Tri-M from a cramped office above a two-car garage with only a truck, ladder and a dream. Eager to succeed on their first job, they forget to secure the ladder and lose it along the way. Fortunately, a local farmer witnesses the event and returns the ladder to the Mussers, ensuring their bright future.
- 1966** Tri-M builds a shop on South Walnut Street in Kennett Square, Pennsylvania.
- 1968** Rapid growth of the young company requires the construction of a larger space next door.
- 1972** Tom purchases Dick's half of the business, and Tri-M Electrical Contractors, Inc. is formed.
- 1978** Tri-M outgrows its second building. A new 22,000 square foot facility is built at 204 Gale Lane.
- 1979** Building Automation Systems is formed providing customers with engineered building monitoring and control systems.
- 1985** Tri-M's growth necessitates a 12,000 square foot addition to 204 Gale Lane.
- 1989** Tri-M celebrates its 25th anniversary. Keeping up with advancing technology, Tri-M creates a Special Systems Group that specializes in voice/data, life safety, access control and a variety of custom-designed, integrated communication systems.
- 1990** Tri-M expands into the Allentown, PA area with a new office.
- 1997** In order to keep up with Tri-M's growth, an additional 35,000 square foot facility is constructed at 206 Gale Lane.
- 1998** Founder Tom Musser sells Tri-M to another owner and retires.
- 2002** Tom Musser, with Jim Horn, repurchase Tri-M, and The Tri-M Group, LLC is formed.
- 2004** EnerG Test (a wholly-owned subsidiary) is founded, providing electrical testing, maintenance and repair.
- 2011** Tri-M expands into Delaware, as well as Northern Pennsylvania.
- 2014** Tri-M celebrates its 50th anniversary at Longwood Gardens. Many of Tri-M's very first customers are in attendance.
- 2015** Our new Lock Haven, Pennsylvania office is constructed. Building Automation Systems launches Energy Analytics.
- 2016** In January, Vice Presidents Ron-Bauguess and Chris Peirson become owning partners in Tri-M with Jim Horn and Tom Musser. In July, our founder Tom Musser passed away leaving a legacy of integrity and leadership.
- 2017** Prefabrication is launched with 10,000 sq/ft facility in Allentown, Pennsylvania.
- 2019** Tri-M celebrates its 55th anniversary.
- 2021** Jim Horn, Ron Bauguess and Chris Peirson sell Tri-M to the employees. Tri-M becomes a 100% Employee Owned ESOP.



A LEGACY OF SUCCESS IN THE TRUE AMERICAN TRADITION





100% EMPLOYEE OWNED

Our mission starts by placing our employees first, knowing that a highly trained, skilled and compensated workforce can better serve our customers, families and communities.

We build long-term relationships with customers, becoming a trusted partner in their business, providing the safest and highest quality service ensuring success for us both.

Our mission continues as we invest in our employees, in safety and in opportunities that will ensure the future growth and success of our company.

OPPOSITE - EXECUTIVE LEADERSHIP LEFT TO RIGHT:

AMANDA NOVAK
Vice President of HR

RON BAUGUCESS
Executive Vice President

JIM HORN
President / CEO

CHRIS PEIRSON
Executive Vice President

MATT MONZO
Chief Financial Officer



WE LEAD WITH SAFETY

IT IS HOW WE BEGIN EVERY DAY AND WHAT BRINGS US HOME

Why I Work
Safely



DAILY TOOLBOX TALKS

Safety is our first core value. For this reason, we start every job with clear instructions on the possible hazards facing that day's work. These group discussions help reinforce a culture where open dialogue about safety on the job site is encouraged. A safe day's work saves time, money and most importantly, lives.



STOP WORK AUTHORITY

We have empowered each employee with the ability to Stop Work if they identify an unsafe act, behavior, or situation. Our owners and leadership team are committed to taking the appropriate actions or measures to ensure the potential hazards have been corrected before work resumes.



ONGOING SAFETY TRAINING

Tri-M invests over \$1 million annually on safety and training. Every member of our team receives this ongoing safety training beginning on their first day. We are hardwired for safety. Our safety program is designed to protect our team and our customers while maximizing construction efficiency and facilitating on-time project completion.

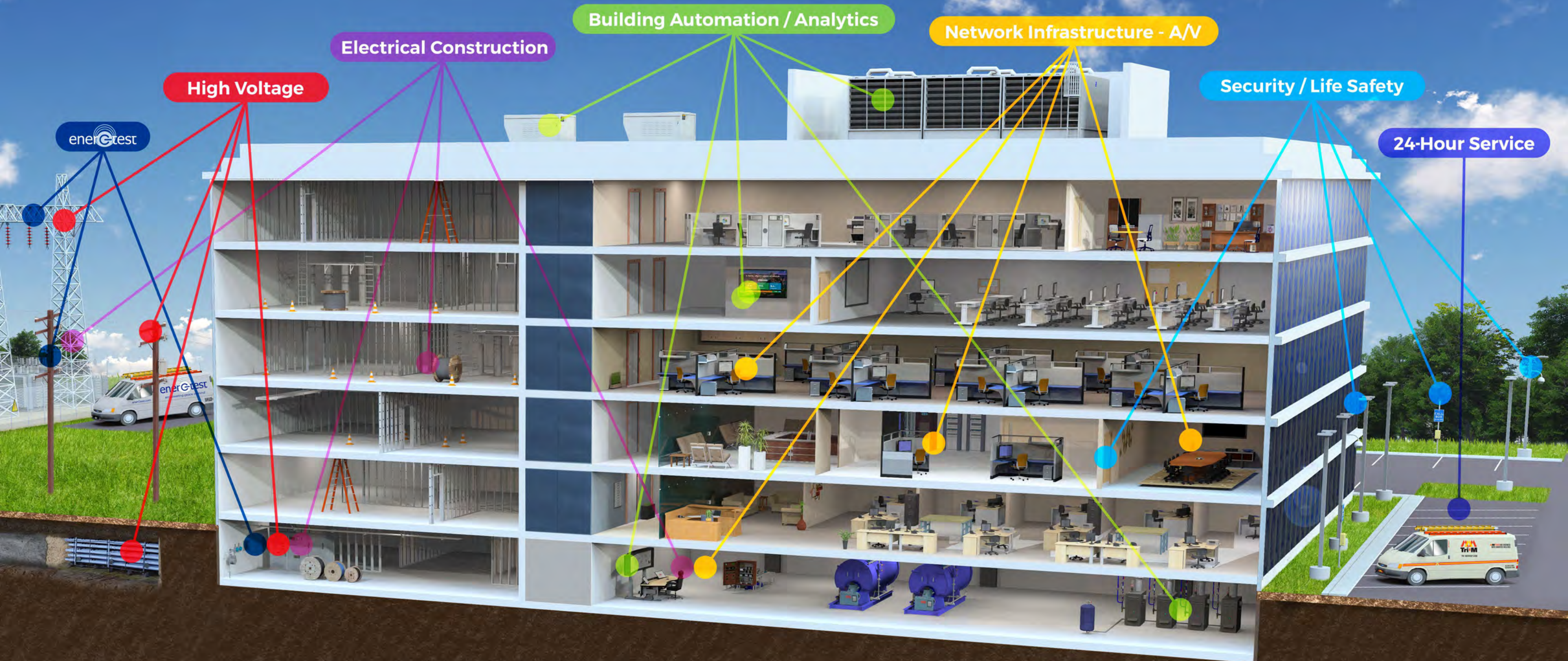


AWARD-WINNING SAFETY

Recent recipient of the IEC-CNA Safety Award, Tri-M received national recognition with this elite award for the independent electrical industry. Qualified programs demonstrate the highest safety standards along with commitment from ownership, active participation throughout the company and effective controls over major exposure to loss.

POWERING BUSINESS WITH SMARTER FACILITIES

LEARN MORE AT TRI-MGROUP.COM



SAFETY IS OUR FOUNDATION

PRIORITIZING SAFETY IS A PART OF THE CULTURE AT TRI-M

Tri-M complies and trains to the most current NFPA 70E standards for electrical safety in the workplace. We believe following the most up-to-date standards will help us provide a safe work environment for our most important resource, our employees. We further believe that this mindset is integral to our customers' expectation of quality service completed safely.



DAILY TOOLBOX TALKS

Every job begins with clear instruction on the potential hazards facing that day's work. These open group discussions help reinforce a culture of safety.



STOP WORK AUTHORITY

Our owners and leadership have empowered each employee with the ability to stop work if they identify an unsafe act, behavior, or situation.



ONGOING TRAINING

Tri-M invests over \$1 million annually on safety and training. Every member of our team receives ongoing safety training beginning on their first day.

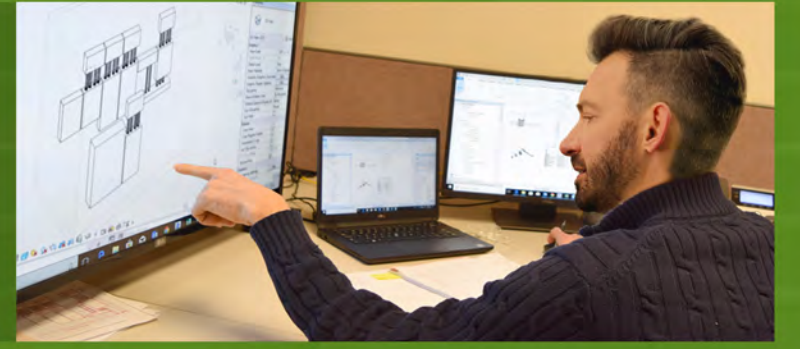


PREFABRICATION VIRTUAL CONSTRUCTION

MEETING YOUR MOST DEMANDING BUDGETS & SCHEDULES

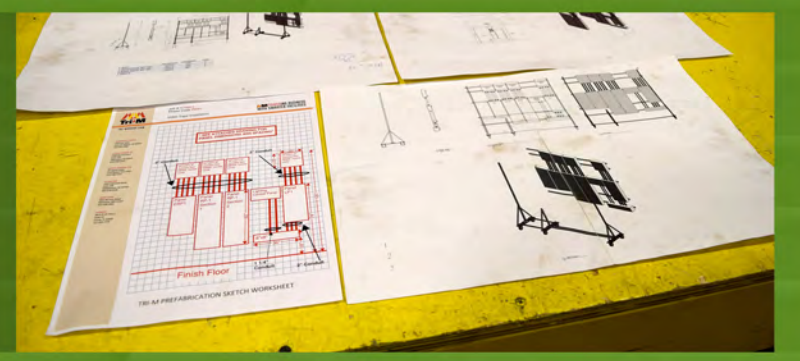
ENGINEERING

Tri-M utilizes the latest technology in electrical construction. Even before construction begins, tools like BIM aid the trades in pre-planning and collaboration. Staying current with advances in technology helps our engineers and estimators stay precise with design services.



DESIGN

The prefab process starts before our team ever sets foot on a jobsite allowing us to meet or beat the most demanding project schedule. The Prefab Team is skilled to handle full drawing review identifying all the items listed for the project that can be prefabricated.



PREFABRICATION

Tri-M's prefab facility provides a controlled construction environment making work inherently safer by turning labor intensive tasks typically done onsite into efficient, cost-saving opportunities. Complete assemblies delivered with installation drawings ensure accuracy and productivity onsite.



INSTALLATION

Our team works with onsite crews to coordinate deliveries to help you meet the most demanding budgets and jobsite schedules.





HIGH VOLTAGE

BRINGING THE POWER YOU NEED



24X7 EMERGENCY STORM CALL

Our customers know that during a power emergency Tri-M is ready to mobilize, 24/7. Services are available for equipment failure, storm recovery, temporary power solutions, fault locating and underground cable locating. Our linemen are skilled, highly trained and certified to perform Hot Line Glove Work (up to 34 kV) and Hot Stick Work (up to 34 kV).



DESIGN / BUILD

We offer design/build solutions for new construction or renovation of substations, existing overhead and underground power transmission and distribution systems ranging in voltages from 15kV up to 500kV. Tri-M is with you from project planning and design, to installation, commissioning and maintenance of your power system.



INSTALLATION & MAINTENANCE

Tri-M's high voltage team is comprised of engineers and linemen that specialize in the installation and management of all medium / high voltage electrical power requirements. We can design solutions to address any power issues and help plan for the future.

SERVICE OFFERINGS

- Emergency Response
- Substation Construction or Renovation
- Transformer / Generator Supply & Installation
- SF6 Gas Breakers Installation & Upgrade
- Primary Metering & Switch Installation
- Duct Bank Installation
- Wooden Pole Installation & Removal
- Steel Pole & Substation Structure Installation
- Underground Primary & Secondary Cable Installation
- Certified Cable Splicing
- Fault Locating and Underground Cable Locating
- Post Storm Power Restoration



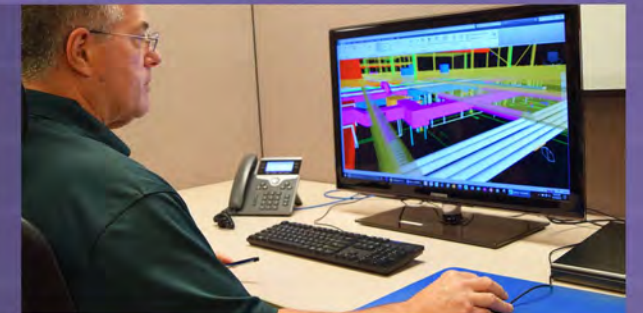
ELECTRICAL CONSTRUCTION

YOUR SINGLE SOURCE FROM UTILITY TO TERMINAL

Your electrical system is the heart of your facility's infrastructure.

ENGINEERED SOLUTIONS

Every project is unique, so our engineers and electricians work with the latest technology to deliver a customized solution for your complex energy needs. Utilizing the latest 3D modeling and BIM, Tri-M's experienced teams are known for consistently producing quality work, from heavy industrial installations to the most sophisticated commercial projects.



EXCEPTIONAL CONSTRUCTION

Tri-M has been safely planning, engineering, constructing and servicing electrical systems for over half a century and this expertise sets us apart. Our prefabrication services offer the ability to streamline parts of your project to help meet the most demanding budgets and schedules. On site, our reputation for exceeding expectations ensures your project stays safely on track.



LONG-TERM / CONSTANT PRESENCE

Building long-term relationships with customers is a top priority. From pre-planning through start-up, we safely approach each project with your needs at the forefront. Our dedicated service team is available 24/7 to respond to your critical electrical needs. Constant presence services are also available for those requiring dedicated on-site electricians or support.



ALTERNATIVE / RENEWABLE ENERGY

Green power alternatives help empower smarter facilities. Take advantage of renewable energy features such as free-standing or rooftop solar panels and energy-efficient building automation systems. We offer a full range of integrated solutions to bring solar projects from conceptual design to completion and services for the life of the equipment.





BUILDING AUTOMATION

OPTIMIZE YOUR FACILITY FOR EFFICIENCY AND COMFORT



ENGINEERING, INSTALLATION & SERVICE

Your facility is unique, so our team customizes solutions for your facility management requirements out-of-the-box products struggle to provide. Our quality engineering, installation and service ensure energy-efficient building operation and occupant comfort for the long-term.



SYSTEMS INTEGRATION

Integration allows direct communication with multiple building systems including HVAC, lighting, security and third-party equipment in your facility resulting in one common user interface for all systems. Monitoring these systems becomes easier with one completely web-accessible solution.



CUSTOM PANEL FABRICATION

Tri-M's in-house panel shop builds custom panels that precisely meet customer specifications. Engineering designs each panel to the exact requirements of the system and facility. Our panel fabrication team then creates and tests each panel with attention to detail and accuracy.



CUSTOMER TRAINING

Tri-M offers customer training classes on the Continuum and EcoStruxure™ product lines. Our goal is to provide each student with hands-on training. Limited class sizes allow for more hands-on experience and individual instruction. Signing up is simple through our website.

EcoStruxure™ Andover Continuum™ by Schneider Electric

The EcoStruxure™ technology platform brings together energy, automation, and software. It provides enhanced value around safety, reliability, efficiency, sustainability, and connectivity including today's IoT environment.

Installation, support and service is also available on the reliable, industry-standard, Andover Continuum platform.

TRIDIUM Integration, installation, support and service of the Tridium/Niagra platform.



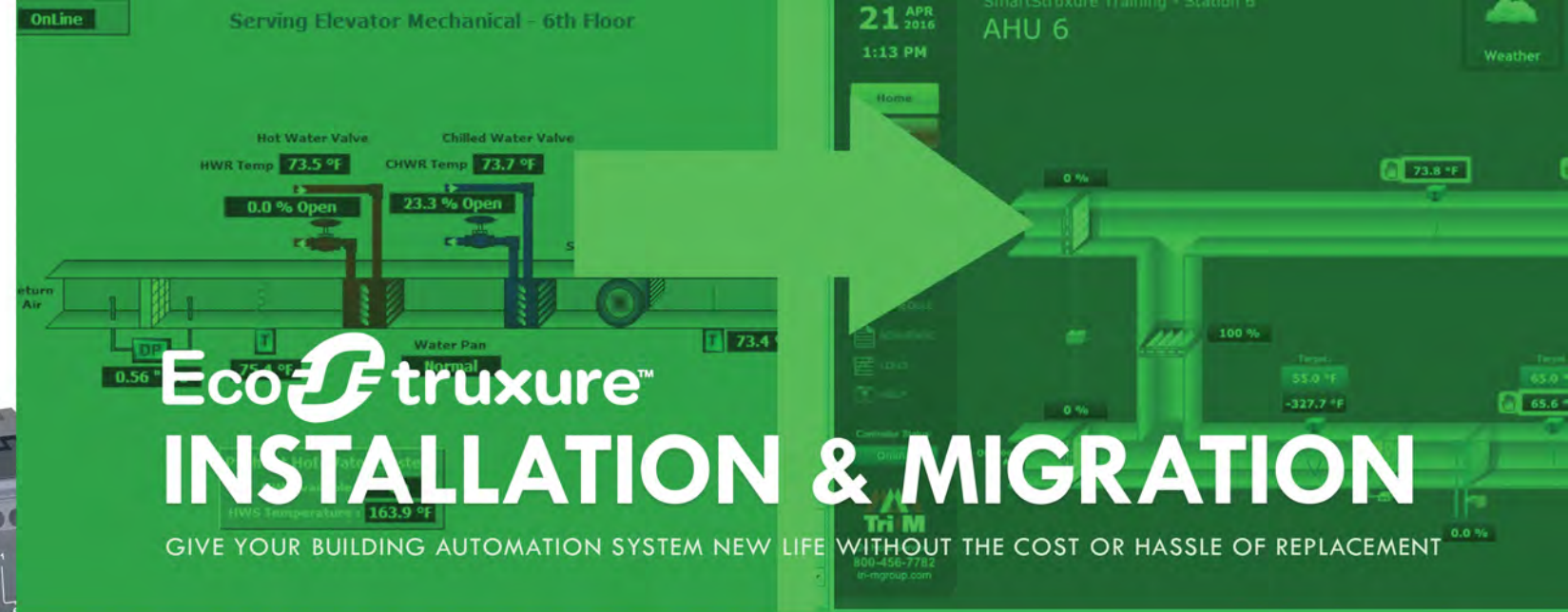
LEARN MORE AT TRI-MGROUP.COM

EcoStruxure™

PRESENTED BY THE **Tri-M** GROUP, LLC

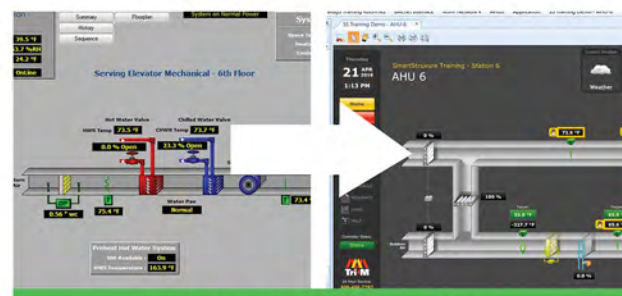


give your building automation system new life without the cost and hassle of replacing it



EcoStruxure™ INSTALLATION & MIGRATION

GIVE YOUR BUILDING AUTOMATION SYSTEM NEW LIFE WITHOUT THE COST OR HASSLE OF REPLACEMENT



MIGRATION FLEXIBILITY

- Native Open Protocol Support (BACnet, Modbus, & LON)
- Take Advantage of New Software, Technology & Hardware
- A Fraction of the Cost of System Replacement



SMART CONTROLLERS

- Existing Field Controllers, Devices, Sensors Stay in Place
- Reuse System Design, Configuration and Wiring
- Network Controller and Stand Alone Server In One



MULTIPLE INTERFACE OPTIONS

- Browser Based Interface - Scalable Responsive Graphics
- Desktop, Mobile Device and Tablet Friendly
- WorkStation, WebStation and Mobile Apps



HANDS-ON TRAINING

- Acquire a Higher Level of Knowledge on Your System
- Customized Classes and One to One Training
- Classes Available on Programming, Operation & Hardware

THE TRI-M GROUP, LLC - 206 GALE LANE - KENNETT SQUARE, PA 19348

Tri-M POWERING BUSINESS WITH SMARTER FACILITIES

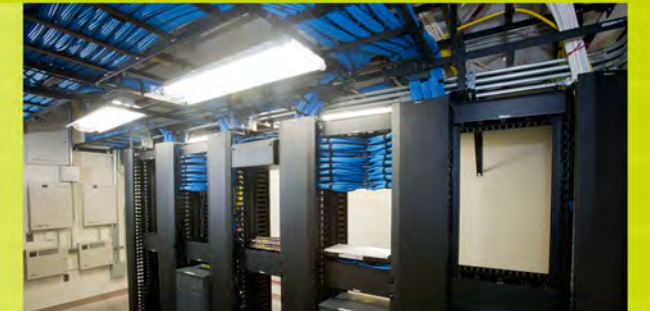
TRI-MGROUP.COM
610-444-1000

NETWORK INFRASTRUCTURE

SCALABLE SOLUTIONS FOR COMPLEX CONNECTIONS

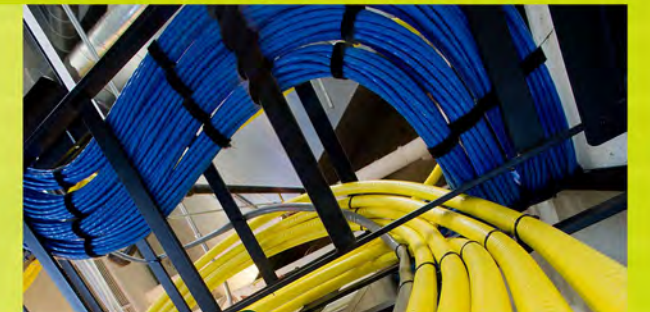
DATA CENTERS

In the ever-changing networking environment, Tri-M understands the importance of having reliable channels for communications, whether wired or wireless. Let our team of certified installation and design engineers guide you through your data center design and integration.



STRUCTURED CABLING

Tri-M's in-depth experience with copper and fiber optic network cabling installations helps us provide you with the most flexible designs and allows you to achieve the best performance metrics for your network application. Our BICSI certified staff creates custom designs based on ANSI/TIA/EIA standards.



MASS NOTIFICATION

Tri-M can provide a quick and easy solution for all your sound and emergency notification needs. These systems can easily integrate into your existing voice/network system. Our solutions can be tailored to fit your specific needs from small offices to multi-campus, large-scale environments.



A/V SYSTEMS

Creating a first-class A/V system involves many variables and Tri-M is equipped to guide you through the process. As a certified preferred partner of Extron, we have installation and engineering staff ready to assist you through each phase of your A/V integration, system design, video conferencing or digital displays.



LEARN MORE AT TRI-MGROUP.COM



SECURITY & LIFE SAFETY

PROTECTING WHAT MATTERS MOST



ACCESS CONTROL

Secure access points provide peace of mind. Keep facilities, classrooms and public buildings safe and secure. We engineer, install and service custom solutions, including multi-card and mobile credentials, to safeguard your assets.

- ◆ Visitor Management
- ◆ Site/Gate/Intercom Controls
- ◆ Asset/Patient Tracking
- ◆ ICD 705 - SCIF Doors
- ◆ Biometric Security
- ◆ Integrated Access Control
- ◆ Wireless Access Control



IP/CCTV SURVEILLANCE

Have peace of mind knowing your facility is protected by the most detailed and reliable video surveillance solution. Our team is certified with many of the industry's leading Video Management Systems (VMS).

- ◆ Video Analytics
- ◆ Facial/Appearance Recognition
- ◆ License Plate Recognition
- ◆ Perimeter Security
- ◆ Monitoring Solutions
- ◆ Mobile Security Solutions
- ◆ Object Detection



LIFE SAFETY

Your most precious resource is human. We work with you to assess your facility's personal safety preparedness and identify areas of weakness or concern. Together, we will find the right solution for your security.

- ◆ Emergency Call Systems
- ◆ Mass Notification Systems
- ◆ GPS Awareness Tracking
- ◆ Threat/Incident Monitoring
- ◆ A/V Alert Systems
- ◆ Campus Safety Assessment
- ◆ Intrusion Detection

Understanding the critical nature of your security, and the importance of seamless systems integration, we install, service and partner with:



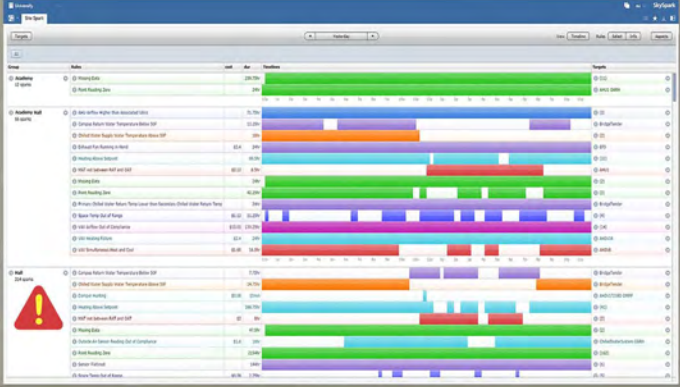


ANALYTICS

FINDING THE VALUE IN YOUR DATA

ANALYSIS

Collection and analysis of your data helps identify issues that are difficult to discover manually. Faulty sensors, overridden equipment or incorrect sequences can cost thousands in energy leaks. Tri-M Analytics shows how your facility systems are really operating.



EVALUATION

Leveraging analytic data will reduce operating costs and extend the life of equipment, all while maintaining comfortable temperatures, humidity and lighting levels. Our team of programmers, engineers and designers help you optimize your systems to maximize your facility's efficiency.



ACTION

While other analytics services stop at evaluating data, Tri-M has a team of experienced technicians ready to utilize insights gained in the analysis process to address issues. Our team can perform periodic inspections, provide root cause analysis and where possible, resolve inefficiencies.



REPORTING

Facility management requires measurement. Customized reports allow you to measure past energy usage, water consumption, and greenhouse gas emissions. Create usage goals by comparing periodic usage versus your baseline.

LEARN MORE AT TRI-MGROUP.COM



(800) 456-7782

24-HOUR SERVICE

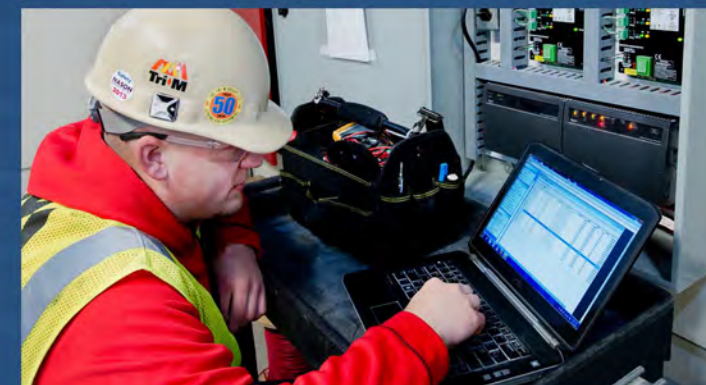
YOU CAN TRUST THE TECH IN THE TAN VAN

- ◆ Electrical
- ◆ Building Automation
- ◆ Network Infrastructure
- ◆ Security & Life Safety
- ◆ Preventative Maintenance
- ◆ Constant Presence



EMERGENCY RESPONSE

Electrical problems caused by storms, equipment failure and breakdown can result in substantial loss of money, productivity and even threaten lives. We are serious about service, and we get you up and running in as little time as possible.



SCHEDULED MAINTENANCE

Preventative service helps your systems stay healthy and operating at optimum efficiency. We can help develop a plan that will take the guesswork out of maintaining your facilities and help you get the most out of your equipment.



FLEXIBLE CONTRACTS

Your facility is unique, so we work with you to create a tailored solution that fits your specific needs and budget. Our technicians can make periodic visits, or if your campus requires it, serve as a constant presence.

INSTRUMENTATION



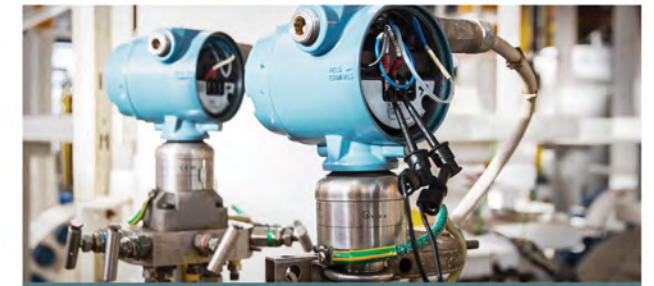
INSTRUMENTATION SERVICES

PRECISION INSTALLATION, CALIBRATION & SERVICE



START-UP & COMMISSIONING

- Installation of Field Instruments, Impulse Tubing, & Wiring
- ISA CCST Technicians
- "Constant Presence" Service Contractor



ROUTINE CALIBRATIONS

- Pressure
- Flow
- Capacitance
- Temperature
- Conductivity
- Humidity
- Level
- pH/ORP
- Speed



GAS CALIBRATIONS

- LEL, Oxygen & Toxics
- Centralized Storage of Calibration Documentation
- Calibration Service Contracts



DCS / PLC

- Installation, Upgrades and Troubleshooting
- UL Certified Custom Panel Shop In-House
- PLC Programming

THE TRI-M GROUP, LLC - 206 GALE LANE - KENNETT SQUARE, PA 19348

Tri-M POWERING BUSINESS WITH SMARTER FACILITIES

TRI-MGROUP.COM
610-444-1000



EMPOWERING PEACE OF MIND

REST EASIER KNOWING ENER G TEST HAS YOU COVERED



TESTING SERVICES

Our experienced team provides you with acceptance and maintenance testing ensuring system optimization.

- ◆ Acceptance & Maintenance
- ◆ Power Quality
- ◆ Commissioning



QUALITY ENGINEERING

Trusted engineering services help you identify problems before they cause performance issues.

- ◆ System Upgrades/Expansions
- ◆ Design/Build
- ◆ Analytics & Support



EMERGENCY RESPONSE

Rest easy knowing you have a partner ready at a moment's notice to provide rapid emergency service.

- ◆ Safe/Experienced
- ◆ Restoration/Support
- ◆ 24-Hour Availability

energG-test

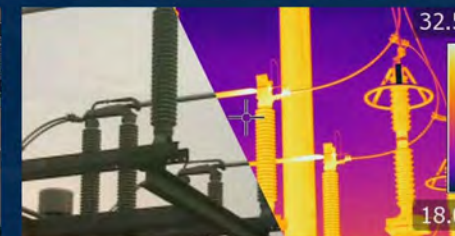
empowering peace of mind

ENERGTEST IS A WHOLLY OWNED SUBSIDIARY OF THE TRI-M GROUP, LLC

ADDITIONAL SERVICES



INSTALLATION

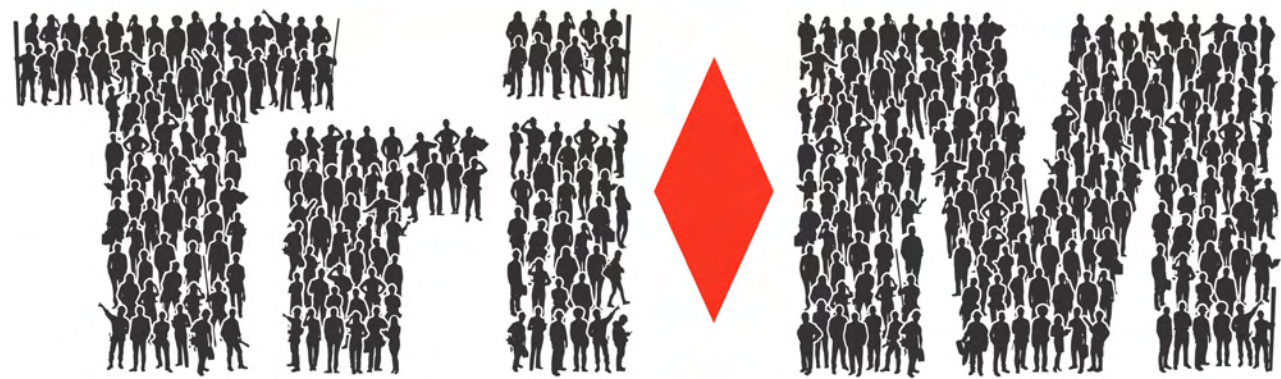


THERMOGRAPHY



OIL SAMPLING

LEARN MORE AT TRI-MGROUP.COM




EMPLOYEE OWNED


 **POWERING BUSINESS WITH SMARTER FACILITIES**







KENNETT SQUARE 206 GALE LN | PO BOX 69 | KENNETT SQUARE, PA | 610.444.1000
LEHIGH VALLEY 7584 MORRIS COURT | SUITE 230 | ALLENTOWN, PA | 610.289.2420
NORTH CENTRAL 39 HEALTH DRIVE | LOCK HAVEN, PA | 570.748.7515
MARYLAND 3915 BENSON ROAD | BALTIMORE, MD | 410.368.3981
DELAWARE 1050 INDUSTRIAL ROAD | SUITE 240 | MIDDLETOWN, DE | 302.376.0150

LOCK HAVEN 


QUAKERTOWN 

KENNETT SQUARE 

MIDDLETOWN 

BALTIMORE 

TRI-MGROUP.COM
800.456.7782
24-HR CUSTOMER SERVICE

 **MPOWERING BUSINESS WITH SMARTER FACILITIES**